

BOLERO

The sales amount of this villa founded on an area of 1308 m2, having a basement of 261 m2 hosting hobby areas and parking, Turkish Bath, sauna, bowling salon, a ground floor of 261 m2 where there is a living room and chambers of 261 m2 and bedrooms of 783 m2 construction area is as following.

It will be designed according to your initiative with materials of

1st quality to be selected among the most luxury products

1308 m2 land x 200 \$ = 261.600 \$

783 m2 construction area x 900 \$ = 704.700 \$

total: 966.300 \$

To give an example of materials to be selected from materials of

2nd quality, your villa will be equipped with materials such as Franke kitchen system, schüco aluminium joinery, grohe bath systems.

1308 m2 land x 200 \$ = 261.600 \$

783 m2 construction area x 800 \$ = 626.400 \$

total: 888.000 \$

To give an example of materials to be selected from materials of

3rd quality, your villa will be equipped with materials such as vitra bath systems, çanakkale ceramics, pimapen branded aluminium joinery.

1308 m2 land x 200 \$ = 261.600 \$

783 m2 construction area x 500 \$ = 391.500 \$

total : 653.100 \$

Premium Wood Quality

1308 m2 land x 200 \$ = 261.600 \$

783 m2 wooden construction area x 3200 \$ = 2.505.600 \$

total: 2.767.200 \$

BOLERO PLUS

The sales amount of this villa founded on an area of 1308 m2, having a basement of 261 m2 hosting hobby areas and parking area, Turkish Bath, sauna, bowling salon and ground floor of 261 m2 where there are salons and chambers of 261 m2, bedrooms of 100 m2 and pool of 883 m2 construction area is as following.

It will be designed according to your initiative with materials of

1st quality to be selected among the most luxury products.

1308 m2 land x 200 \$ = 261.600 \$

883 m2 construction area x 900 \$ = 794.700 \$

Total=1.056.300 \$

To give an example of materials to be selected from materials of

2nd quality, your villa will be equipped with materials such as Franke kitchen system, schüco aluminium joinery, grohe bath systems.

1308 m2 land x 200 \$ = 261.600 \$

883 m2 construction area x 800 \$ = 706.400 \$

Total: 968.000 \$

To give an example of materials to be selected from materials of

3rd quality, your villa will be equipped with materials such as vitra bath systems, çanakkale ceramics, pimapen branded aluminium joinery.

1308 m2 land x 200 \$ = 261.600 \$

883 m2 construction area x 500 \$ = 441.500 \$

Total: 703.100 \$

Premium Wood quality

1308 m2 land x 200 \$ = 261.600 \$

783 m2 wood construction area x 3200 \$ = 2.505.600 \$

100 m2 pool area x 500 \$ = 50.000 \$

Total: 2.817.200 \$

Additional facilities such as Turkish Bath, Sauna and Bowling Hall are optional extras and available on request.



BUSELİK

The sales amount of this villa founded on an area of 522m2, having a basement of 104 m2 hosting hobby areas and parking area, Turkish Bath, sauna, bowling salon, a ground basement of 104 m2 where there are salon and rooms of 104 m2, bedrooms of 32 m2 and pool of 344 m2 construction area is as following.

It will be designed according to your initiative with materials of **1st quality** to be selected among the most luxury products.

522 m2 land x 200 \$ = 104.400 \$
344 m2 construction area x 900 \$ =309.600\$
Total: 414.000 \$

To give an example of materials to be selected from materials of **2nd quality**, your villa will be equipped with materials such as Franke kitchen system, schüco aluminium joinery, grohe bath systems.

522 m2 land x 200 \$ = 104.400 \$
344 m2 construction area x 800 \$ = 275.200 \$
Total: 379.600 \$

To give an example of materials to be selected from materials of **3rd quality**, your villa will be equipped with materials such as vitra bath systems, çanakkale ceramics, pimapen branded aluminium joinery.

522 m2 land x 200 \$ = 104.400 \$
344m2 construction area x 500 \$ =172.000 \$
Total: 276.400 \$

Premium Wood quality

522 m2 land x 200 \$ = 104.400 \$
312 m2 wood construction area x 3200 \$ =998.400 \$
32 m2 pool x 500 =16.000
Total: 1.118.800 \$

Additional facilities such as Turkish Bath, Sauna and Bowling Hall are optional extras and available on request.



CUBIC

The sales amount of this villa founded on a land of 616 m2 having a basement of 123 m2 hosting hobby areas and parking, Turkish Bath, sauna, bowling salon and a ground basement of 123 m2 where there are salon and rooms of 123 m2 bedrooms of 40 m2 pool of 409 m2 construction area is as following.

It will be designed according to your initiative with materials of **1st quality** to be selected among the most luxury products.

616 m2 land x 200 \$ = 123.200 \$
409 m2 construction area x 900 \$ = 368.100 \$
Total: 491.300 \$

To give an example of materials to be selected from materials of **2nd quality**, your villa will be equipped with materials such as Franke kitchen system, schüco aluminium joinery, grohe bath systems.

616 m2 land x 200 \$ = 123.200 \$
409 m2 construction area x 800 \$ = 327.200 \$
Total: 450.400 \$

To give an example of materials to be selected from materials of **3rd quality**, your villa will be equipped with materials such as vitra bath systems, çanakkale ceramics, pimapen branded aluminium joinery.

616 m2 land x 200 \$ = 123.200 \$
409 m2 construction area x 500 \$ = 204.500 \$
Total: 327.700 \$

Premium Wood Quality

616 m2 land x 200 \$ = 123,200 \$
369 m2 wooden construction area x 3200 \$ = 1.180.800 \$
40 m2 pool area x 500 \$ = 20.000 \$
Total: 1.324.000 \$

Additional facilities such as Turkish Bath, Sauna and Bowling Hall are optional extras and available on request.



OTTOMAN

The sales amount of this villa founded on a land of 539 m2 having a basement floor of 105 m2 hosting hobbies are and parking area, Turkish bath, sauna, bowling salon and ground floor of 105 m2 where there are salon and rooms of 105 m2 and bedrooms of 315 m2 construction area is as following.

It will be designed according to your initiative with materials of

1st quality to be selected among the most luxury products.

539 m2 land x 200 \$ = 107.800 \$

315 m2 construction area x 900 \$ =283.500 \$

Total 391.300 \$

To give an example of materials to be selected from materials of

2nd quality, your villa will be equipped with materials such as Franke kitchen system, schüco aluminium joinery, grohe bath systems.

539 m2 land x 200 \$ = 107.800 \$

315 m2 construction area x 800 \$ =252.000 \$

Total: 359.800 \$

To give an example of materials to be selected from materials of

3rd quality, your villa will be equipped with materials such as vitra bath systems, çanakkale ceramics, pimapen branded aluminium joinery.

539 m2 land x 200 \$ = 107.800 \$

315 m2 construction area x 500 \$ =157.500 \$

Total: 265.300 \$

Premium Wood Quality

539 m2 land x 200 \$ = 107.800 \$

315 m2 wood construction area x 3200 \$ =1.008.000 \$

Total: 1.115.800 \$

OTTOMAN PLUS

The sales amount of this villa founded on a land of 797 m2 having a basement floor of 160 m2 hosting hobby and parking areas, Turkish bath, sauna, bowling salon and a basement floor of 160 m2 where there are salons and rooms of 160 m2 and bedrooms of 50 m2 pool 530 m2 construction area is as followingis as following.

It will be designed according to your initiative with materials of

1st quality to be selected among the most luxury products

797 m2 land x 200 \$ = 159,400 \$

530 m2 construction area x 900 \$ =477.000 \$

Total: 636.400 \$

To give an example of materials to be selected from materials of **2nd quality**, your villa will be equipped with materials such as Franke kitchen system, schüco aluminium joinery, grohe bath systems.

797 m2 land x 200 \$ = 159,400 \$

530 m2 construction area x 800 \$ =424.000 \$

Total: 583.400 \$

To give an example of materials to be selected from materials of **3rd quality**, your villa will be equipped with materials such as vitra bath systems, çanakkale ceramics, pimapen branded aluminium joinery.

797 m2 land x 200 \$ = 159,400 \$

530 m2 construction area x 500 \$ =265.000 \$

Total: 424.400 \$

Premium Wood Quality

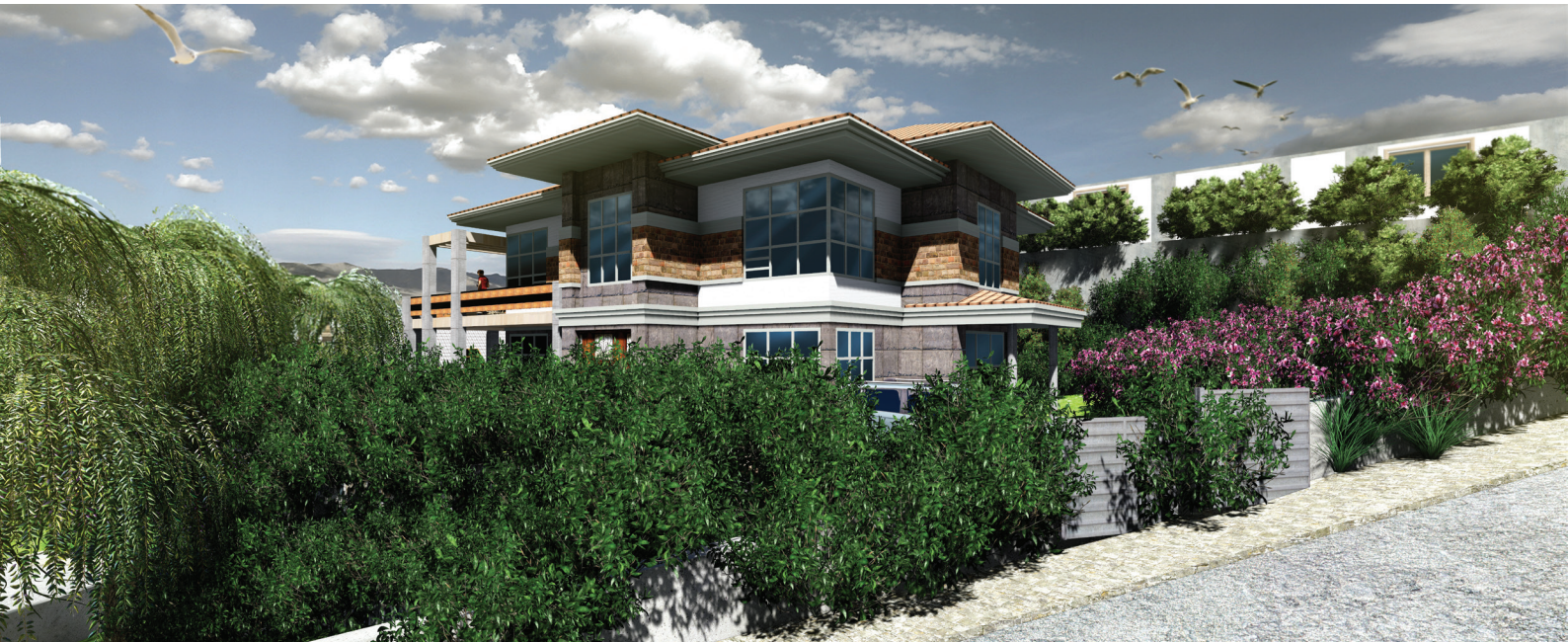
797 m2 land x 200 \$ = 159,400 \$

480 m2 wood construction area x 3200 \$ =1.536.000 \$

50 m2 pool area x 400 \$ = 20.000 \$

Total: 1.715.400 \$

Additional facilities such as Turkish Bath, Sauna and Bowling Hall are optional extras and available on request.



SEGAH

The sales amount of this villa founded on a land of 384 m² with a ground floor of 77 m² hosting salon, kitchen and upper story of 77 m² with big bedrooms of 77 m² upstairs rooms 231 m² construction area is as following.

It will be designed according to your initiative with materials of **1st quality** to be selected among the most luxury products.

384 m² land x 200 \$ = 76.800 \$

231 m² construction area x 900 \$ = 207.900 \$

Total: 284.700 \$

To give an example of materials to be selected from materials of **2nd quality**, your villa will be equipped with materials such as Franke kitchen system, schüco aluminium joinery, grohe bath systems.

384 m² land x 200 \$ = 76.800 \$

231 m² construction area x 800 \$ = 184.800 \$

Total: 261.600 \$

To give an example of materials to be selected from materials of

3rd quality, your villa will be equipped with materials such as vitra bath systems, çanakkale ceramics, pimapen branded aluminium joinery.

384 m² land x 200 \$ = 76.800 \$

231 m² construction area x 500 \$ = 115.500 \$

Total: 192.300 \$

Premium Wood Quality

384 m² land x 200 \$ = 76.800 \$

231 m² wood construction area x 3200 \$ = 739.200 \$

Total: 816.000 \$



ARSA

The façade of our land where our whole project of 26.300 m² will be installed is turned towards the unique landscape of Körfez Gulf, the rear front looks to the wood. Our villas of different house type, separated from each other with landscape gardening, offer the calmness and privacy at the same time despite the residence owners are inside community.

The number of types to be constructed within the land of 26.300 m² in question is given as following;

- Ottoman Villa / 30 PCS
- Ottoman Plus Villa / 20 PCS
- Segah Villa / 42 PCS
- Bolero Villa / 13 PCS
- Bolero Plus Villa / 13 PCS
- Buselik Villa / 31 PCS
- Cubic Villa / 26 PCS

The existing layout plan was prepared according to 26 mixed villas.

Land price: 26.300 m² x 200 \$ = 5.260.000 \$

